



# VERSATILE STUDIOS

NEW YORK • LOS ANGELES • LISBON

**STUDIO  
RENTALS:  
LOS ANGELES**







| STUDIO                | SPACE DETAILS  | AMENITIES   |
|-----------------------|--|---|
| Studio 01             | 40' x 35'<br>12' usable ceiling height<br>1200 SF    | ground floor access, AC, WIFI, coffee bar, sonos system, makeup stations, rack & steamer. 220 AMPS of dedicated power, Grip & Lighting on site, Daylight Skylight, Corner Cyc 12' 4" High, 29' Wide by 18' Deep, Subfloor 32' Deep. |
| Production Office 01  | 11' x 17'<br>200 SF                                  | ground floor access, AC, WIFI, coffee bar, sonos system, 5 chairs, 5 desks  |
| Production Office 02  | 11' x 12'<br>140 SF                                  | ground floor access, AC, WIFI, coffee bar, sonos system, 4 desks, 4 chairs  |
| Lobby Area + Hallway  | 2300 SF  | ground floor access, AC, WIFI, coffee bar, sonos system, frame TV, sink, 'quiet room'/separate office, 2 working tables w/ 8 chairs each, 2 couches, 7 armchairs  |
| Whole Building/Events | approx. 5000 SF<br>(Not including EQ Warehouse Area) | ground floor access, elephant door, AC, WIFI, coffee bar, sonos system, makeup stations, rack & steamer, frame TV, sink, "quiet room"/separate office, Basic Kitchen (fridge, sink, microwave, dishwasher, workspace)               |

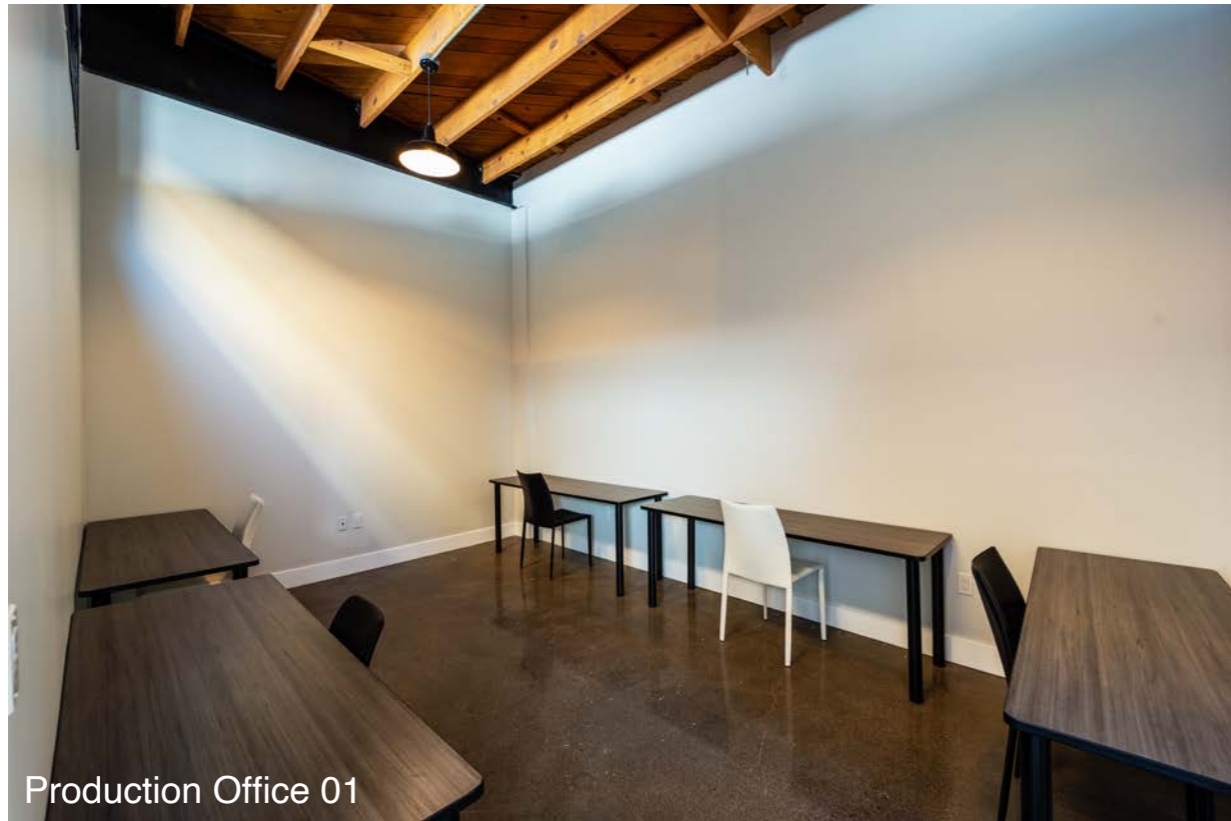
**STUDIO**

**01**



# PRODUCTION OFFICES





Production Office 01



Production Office 02



# LOBBY AREA

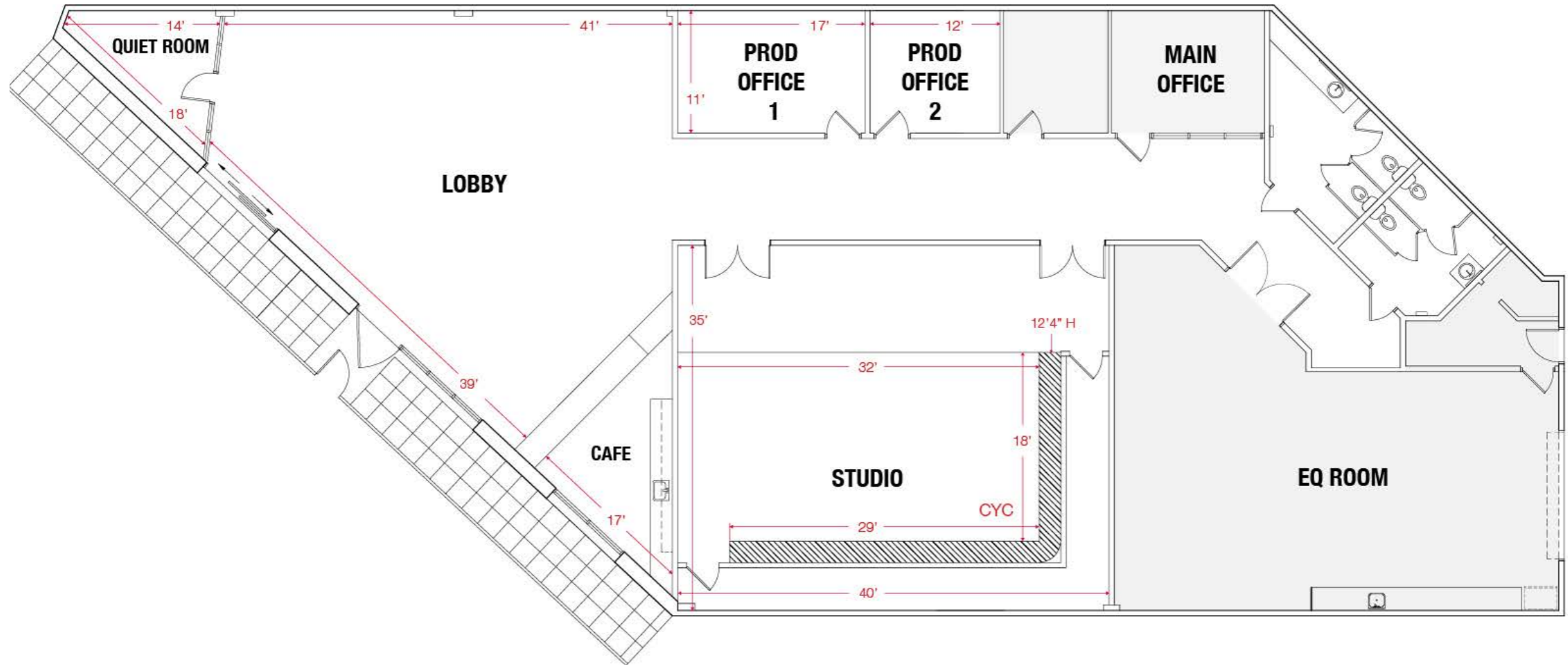








# FLOOR PLAN



# ENQUIRES & BOOKINGS



**FOR ENQUIRES & BOOKINGS  
PLEASE CONTACT**

**DAVE MOLLECK**

Head of LA Studio Operations

dave@versatilestudios.com

(310) 801-5230

**LOS ANGELES**

**5566 W WASHINGTON BLVD**

**LOS ANGELES, CA 900016**

**THANK  
YOU**